

# SiteLine



## Joffre Site Community News

Published for the Central Alberta community by NOVA Chemicals

### December 2013

Volume 24  
Number 4

#### What's Inside...

Taking Care:

Highlights from 2013 ..... 2 - 4

PE1 Expansion Project update.. 5

North rail yard noise abatement strategy ..... 5

Follow-up on traffic study ..... 6

Regulatory updates ..... 6



## Celebrating our 35th year in 2014

2013 was another great year for NOVA Chemicals Joffre Site, providing us an excellent platform from which to launch our 35th year of site operations.

With a vision to become a recognized leader in our markets, we continue to invest in people, technology and assets. The start of construction for our Polyethylene 1 (PE1) Expansion Project this year is a great example of the coming together of years of planning and preparation—from securing our feedstock supplies, to assessing new technologies, to mitigating our environmental footprint. Our business results in 2013 have been strong and prospects for the coming years remain positive as we look towards completion and commissioning of the expansion.

We are proud of how our company has grown and continues to succeed in Central Alberta, providing business and employment opportunities. In the eyes of our employees, there is equal pride in how we continue to define ourselves as a socially responsible neighbour. We have long invested in the success of our communities through partnerships and by contributing to projects that improve the quality of life where we live and work.

In fact, we have recently launched a new "Taking Care" model which frames our unique approach to Responsible Care® and sustainability. In this issue of *SiteLine*, as we have traditionally done at this time of year, we highlight some of the ways we are taking care. Whether helping to make the Hamlet of Joffre's Community



Activity Centre a reality, or ensuring that we assess and address the traffic impacts from increased road and rail activity, our focus is on being engaged with our community—being a good neighbour, asking for input and listening to what you have to say.

Our relationship with you and other stakeholders is a critical component of how we continuously improve so that our future is as solidly built as our 35 year foundation.

In thinking back on 2013, I can clearly see the progress made in attaining our vision. We look forward to working with you to maintain this positive momentum as we move into 2014.

I hope you enjoy the holiday season and a Happy New Year!

**Rick Van Hemmen,**  
Joffre Site Leader

# Taking Care: Highlights from 2013

In 2013, NOVA Chemicals launched “Taking Care”—a company-wide model that builds on our proud tradition of investing in the well-being of our communities. We continue to lend a hand to organizations dedicated to making a difference and improving the overall quality of life in Central Alberta.

2013 was a busy year for our surrounding communities and for NOVA Chemicals. The Hamlet of Joffre now has a Community Activity Centre that reflects proudly on “the spirit of our community.” The City of Red Deer celebrated its Centennial—

a testament to the vision of Central Albertans. And NOVA Chemicals officially began construction on our PE1 Expansion Project, an integral part of our company’s vision to be a recognized leader in our markets. The NOVA Chemicals Community Nature Trail is an environmental legacy project that complements this business investment.

Below are some highlights of how we are “taking care”—with our many community partners. We look forward to working with you again in 2014!

## 511 United Way superheroes score another record-breaker

Our United Way campaign this year focused on participation and “superheroes” and that’s exactly what we got. Our campaign yielded 511 superheroes participating at various levels. Leaders of the Way—employees and retirees who gave at the \$1,000 and up level—increased to 131 from last year’s 117.

Our campaign total continues to grow and our total is now close to \$645,000 raised this year. Since 1995 our annual site United Way campaigns (including employees, retirees and matching corporate funds) are close to breaking through the \$5-million mark.

In addition to this financial support for the critical work the United Way agencies carry out in Central Alberta, 221 employees and leaders went out into the community as part of the United Way Day of Caring® Program. We lent a hand to 25 not-for-profit agencies with 41 assignments. Pictured are some of our superheroes at work!



*Our Joffre Site United Way campaign team presented a cheque in November to the CEO of the United Way of Central Alberta Robert J. Mitchell. Our superheroes pulled through for another record-breaking campaign.*



*Our superheroes helped refurbish a pirate ship activity at KCS Association for early learning and special needs.*



*Painting at the United Way Office.*



*Helping out at the Food Bank.*



*Constructing the haunted house for the Youth & Volunteer Centre of Red Deer’s annual fundraiser. This year the fun event raised more than \$100,000 for the agency.*

## Let's go skating!

By year's end, the NOVA Chemicals Community Centre will be opened for skating and hockey. The Joffre Community Society, Lacombe County and NOVA Chemicals joined forces to make this all-season, outdoor multi-use facility in the Hamlet of Joffre a reality. Finishing touches will be put on the facility during 2014 so that a variety of community events and other sports activities such as ringette, basketball, volleyball and badminton can take place.

In keeping with "The spirit of our community" theme for the activity centre, our PE1 Expansion Project lead contractor, Ledcor helped out during the pour for the concrete rink pad. As the pour was a 24-hour event, Ledcor provided the light towers to shed some light on the evening work.



## Adding trees to our horizons

As part of the celebrations marking the City of Red Deer's Centennial, NOVA Chemicals was proud to sponsor The Centennial Grove Legacy Project covering the purchase of trees and signage. Our employees helped plant and mulch the grove. This project marks the 15th consecutive year our employees have planted trees with the City of Red Deer as part of their Urban Forestry Project.

We have also committed to zero-tree loss as we develop our expanded rail yard. In 2014 we will be planting replacement trees in the new nature trail area after consulting on the optimal variety for the area.



## Supporting the Festival tradition

For the 12th consecutive year, NOVA Chemicals sponsored the *Tis the Season* fundraising luncheon as part of the 20th Anniversary of the Red Deer Festival of Trees tradition. With our leaders, employees and contractors, along with their families and friends, we served lunch to hundreds of generous guests. This year the Festival of Trees is raising funds for the Red Deer Regional Hospital Centre to enhance patient care and services in Diagnostic Imaging, Urology and the Operating Room. Since 1994, the Festival has raised more than \$9.5 million! As always, we were pleased to be part of the 2,200 volunteers who came together with the spirit of the season.

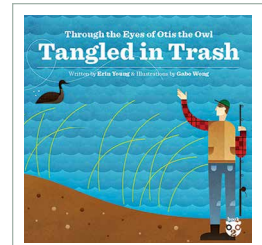
## Taking care with our rivers

Over the years, our employees and their families have readily pitched in to put litter in its place during the national Great Canadian Shoreline Clean-Up. The City of Red Deer adopted a section of the Red Deer River several years ago as part of this national initiative, and we were pleased to support this annual event again this Fall.



## Otis the Owl's new book has arrived

*Tangled in Trash*, the second in the series of children's books, is narrated by the Medicine River Wildlife Centre's education owl and teaches the importance of keeping our environment free of garbage. The book is sponsored by NOVA Chemicals allowing all proceeds to go towards protecting the natural habitat around the Centre. Please see [www.medicineriverwildlifecentre.ca](http://www.medicineriverwildlifecentre.ca) to purchase the book.





## Taking care with our land

Soon we can enjoy the trails! In June 2013 as part of our PE1 Expansion Project groundbreaking event, we announced the NOVA Chemicals Community Nature Trail. The legacy project will preserve and enhance an existing 89-hectare (220-acre) natural wetland area east of our rail yard, just north of the NOVA Chemicals Joffre Site.

This unique area will demonstrate how wildlife habitat, agricultural, industrial and recreational land uses can exist harmoniously together. A detailed design for the area is now complete and work on the marked trails, benches and picnic areas will be in full swing in the Spring. We expect to open the Community Nature Trail in 2014.

## Adopting area highways

As environmental stewards, NOVA Chemicals has been a sponsor of the Alberta Adopt-A-Highway program for many years ensuring our adjacent roadways are clean from litter—eliminating eyesores and potential hazards to wildlife. Annually we support youth groups to help us “put litter in its place” by cleaning up our adopted section of Highway 11 as well as a section of Highway 815.



## Getting behind great leaders

At this year's Leadership Conference Gala, we received recognition for our support of The Leadership Centre of Central Alberta—since 1999 when the centre got its start. Over the years, our staff have participated in the centre's programs, been hands-on volunteers, as well as Board Members.

Executive Director Linda Wilson notes: “When we announced hosting a Leadership Conference, once again NOVA Chemicals was the first company to step up to help make the Conference a reality by being a Platinum Sponsor! It's only fitting that we publicly acknowledge their commitment and strong example of leadership in supporting the Leadership Centre to better serve our community.”



## Inspiring careers

This Fall, 28 Grade 8 students from the Central Alberta school district had a chance to explore the many career opportunities NOVA Chemicals offers. Our employee mentors provided lots of one-on-one time to complement the site tour.



**Wishing you every happiness this Holiday Season  
and throughout the coming year!**

*From all of us at the Joffre Site*

*Seasons Greetings*



## PE1 Expansion Project

# Winter work prepares site for major component deliveries

A lot of progress has been made on the expansion project construction site this year and the skyline will continue to change in 2014. The completion of piling work and the building of concrete foundations are the focus of Winter construction activities. Underground piping work is also nearing completion, with some final activities scheduled for the Spring.

About 100 workers are on site. The peak workforce, which could exceed 800, is expected late in 2014 through 2015. Once commissioning of the expanded facilities begins, workforce numbers will drop to about 50. As tie-in and minor PE1 plant modifications were completed in September, no additional outage of the plant will be required when the new expansion production line is tied-in to the existing facility.

Many of the larger project components are being manufactured off site. These vessels, modules and pre-assemblies will begin arriving at the site in January 2014. Approximately 65 pipe rack modules and structural steel pre-assemblies will be delivered between May and September 2014. Delivery of process equipment such as pumps, vessels and heat exchangers will begin late this year and continue into 2015. The new reactor for the polyethylene production train is being manufactured by an Alberta company, KNM Process Equipment Inc. in Tofield. We expect delivery of the reactor early in 2014.

Together with our heavy-haul transportation service providers, we are working with Alberta Transportation to obtain the necessary permits to move large equipment to the site. Timing of the large shipments, proper signage and strict safety procedures are among the measures to minimize traffic disruption and delays to our neighbours and the communities along the transportation routes.

In the Fall, we received approval from Lacombe County to relocate an existing approach and provide for a secondary access road off Township Road 39-0 to provide wider and more direct access for the large project modules (no regular traffic will use this access). With this access, we avoid lifting of electrical lines which would have been required had the modules been brought in from the west access. Work for this north access was completed in November 2013.

We have awarded the contract for rail track construction for our expanded rail yard to PNR Railworks. Work on the new rail tracks will begin by mid-2014. Currently there are about 20 contract workers on site completing field work such as the installation of drainage structures for the stormwater management system.



*The completion of piling work and the building of concrete foundations are the focus of Winter construction activities.*

## Developing north rail yard noise abatement strategy

As part of our Responsible Care® Good Neighbour Strategy, and to address community concerns, we committed to the development of a noise abatement strategy for our expanded north rail yard.

Work is underway on developing the strategy. We received a number of suggestions from the November 26, 2013 Stakeholder Workshop held in conjunction with our rail service provider CN. (More details on the workshop will be provided in the Spring edition of *SiteLine* and at the 2014 Spring Community Open House.)

Data from our annual community noise monitoring conducted in August at five surrounding resident locations, as well as baseline

monitoring and modeling results which predict noise levels for the future expanded rail yard case will all be used to determine the best path to mitigate future rail yard noise impacts.

As part of the developing strategy, we have added a second rail co-ordinator to our rail operating team to assist in evaluating operations and making recommendations to reduce noise impacts.

We expect to have a preliminary strategy for community input early in 2014. The strategy will be implemented and monitored for effectiveness as expanded rail yard operations are phased in during 2014 to 2015.

## Follow-up on traffic study underway

Among our commitments to the community related to the expansion project is mitigating the potential traffic impacts from an increased site construction workforce and the movement of construction equipment and materials. Priorities are safety on the roadways, as well as managing nuisance issues through measures such as sweeping of intersections to prevent windshield and other damages.

This Fall we completed a traffic study to assess potential impacts and opportunities prior to the peak workforce and construction period. The consultants conducted preliminary modeling on the effect of expected peak construction and turnaround traffic on six major intersections in the area.

Preliminary results were provided at the October 16, 2013 Community Open House. For the most part intersections receive a passing grade. One area for follow-up includes mitigating delays at Freedom Road and Highway 11 from about 5 p.m. to 6 p.m. during peak construction from late 2014 through 2015.

As a result of this study and as part of our Good Neighbour Strategy, we have identified three components in our traffic management program: engineering, education and enforcement. We are working with Lacombe County, our contractors, Alberta Transportation and adjacent industry on the program details.

The following are highlights of how we are proceeding.

**Engineering**—Additional solutions are unlikely beyond the turning lanes we have already put in place on Freedom Road and the new access road to better accommodate the delivery

of large modules (see story on page 5). We are also talking with authorities on potential enhancements or adjustments to signage (eg. change from Stop to Yield sign).

**Education**—Safety is always the priority for the Joffre Site and a common theme in our “Taking Care” communication. Our worker orientation emphasizes the expectation for courteous driving in this rural agricultural community. We stress to workers to “drive carefully and without distraction because their family needs and expects them to arrive home safely.” We regularly promote carpooling and safe driving practices to help mitigate construction workforce impacts. Raising awareness of peak traffic activity periods and of large equipment deliveries with the operating site workforce, adjacent industry and neighbours is ongoing.

**Enforcement**—We are working with Lacombe County to increase resources on area roads during 2014 and 2015.

Ongoing monitoring of area traffic is an important part of the program. We will continue to assess and adjust to the extent possible. As always if we don't meet your expectations or you have an immediate concern, call our 24-hour emergency number at 403-314-8767.



## Regulatory updates

**Proposed on-site electricity substation to meet expansion needs**—The application was submitted in September 2013 to the Alberta Utilities Commission; a decision is expected early in 2014.

**Proposed back-up caustic disposal well**—Early in 2014 we will be submitting a Directive 056 Application to the Alberta Energy Regulator (AER) to drill a back-up disposal well. The back-up disposal well will provide flexibility for system maintenance and safely manage the disposal of water and spent

caustic from ethylene manufacturing. With regulatory approval, we expect to start drilling the well in 2014. Once the new well is drilled, we will apply to the AER for an amendment to our existing well disposal Approval.

**Refurbishment of Ethylene 2 (E2) cracking furnaces**—To help maintain plant operating capacity and accommodate the PE1 Expansion, we are planning to refurbish five of the 11 furnaces. We are reviewing our plans with Alberta Environment and Sustainable Resource Development.

### SiteLine is published by NOVA Chemicals Corporation

P.O. Box 5006, Red Deer, AB, T4N 6A1  
Attn. Roxann Good: 403.314.7421

### For more information, please see these websites:

- [www.novachemicals.com](http://www.novachemicals.com) | [www.novachemicals.com/Joffre](http://www.novachemicals.com/Joffre)
- Chemistry Industry Association of Canada: [www.canadianchemistry.ca](http://www.canadianchemistry.ca)
- American Chemistry Council: [www.americanchemistry.com](http://www.americanchemistry.com)

SiteLine is printed on paper made with 100% post-consumer recycled fibre.

